

mody

316SS ELECTRIC SUBMERSIBLE WASTEWATER PUMPS

DRY PIT

WET PIT

PORTABLE

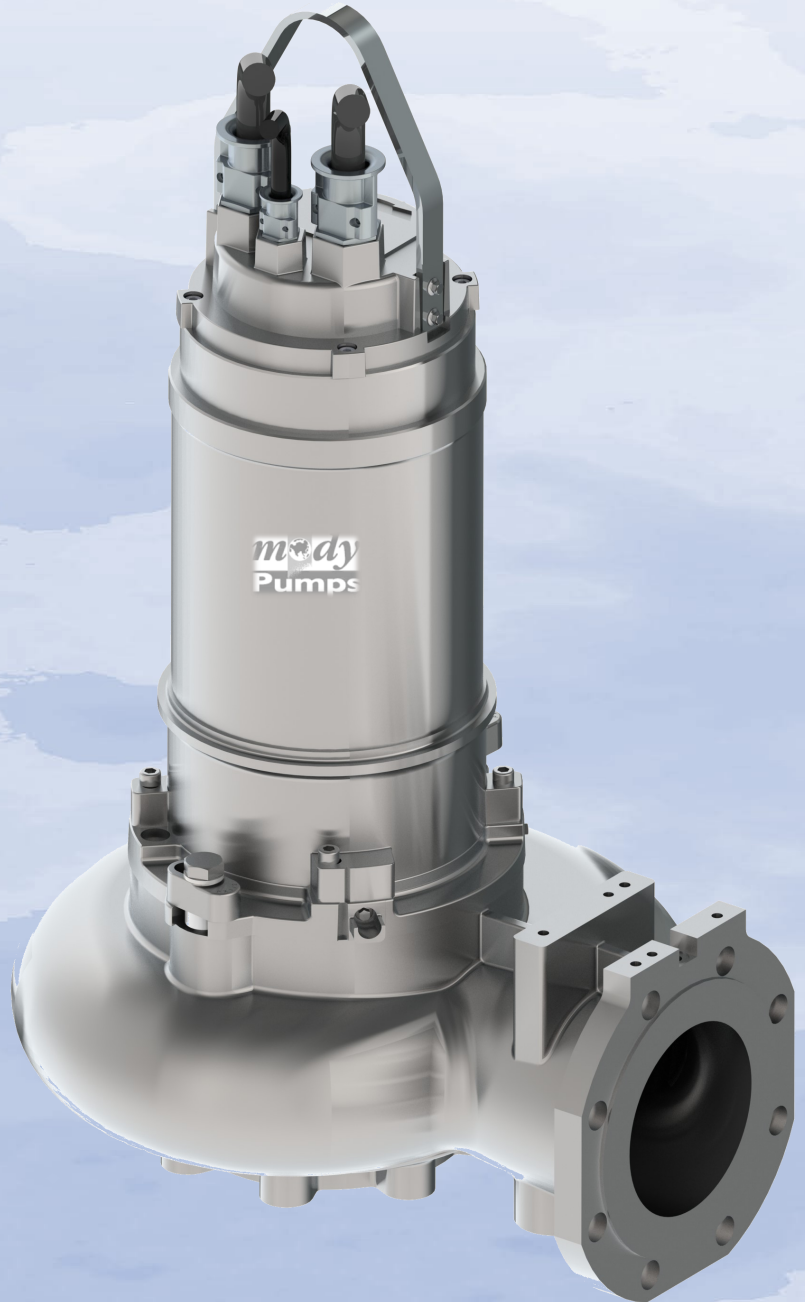
3" to 12" / 80 - 300 mm
DISCHARGE SIZES

MOTORS

2 Pole 6 to 46 HP / 4.5 - 34 kW
4 Pole 4 to 125 HP / 2.2- 93 kW
6 Pole 2.5 to 100 HP / 1.9 - 115 kW
8 Pole 10 to 30 HP / 7.5 - 22 kW
Available in 50/60 HZ

FLOWS

to 8,000 US GPM / 30,283 LPM



mody
Pumps

MSPSS-STAINLESS STEEL SERIES

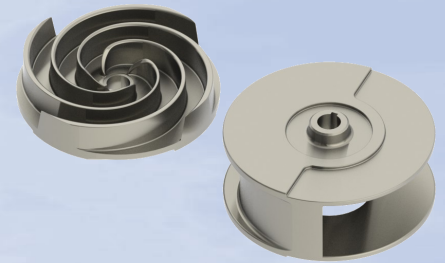
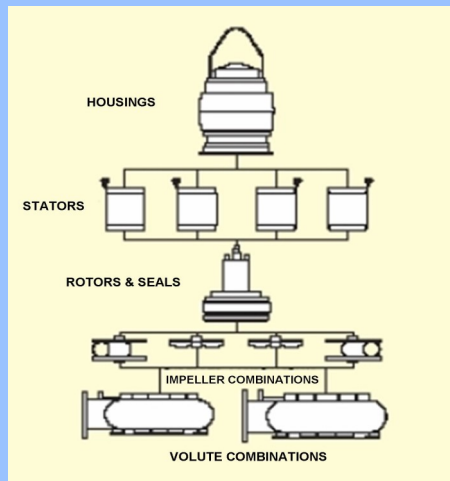
MSPSS Series

- High Efficiency Motors
- Class H (180°C) Insulation
- “Fast-Change” SC/SC Cartridge Mechanical Seals
- Modular Design, Interchange Components
- Adjustable Wear Ring System
- Vortex or Enclosed Impeller on same Shaft/Volute
- Latch-Bolts for Fast-Lock & Quick-Release
- Oil Tap Drain
- Interchangeable Parts with Pumpex® Brand Models
- Easy Retrofit to Pumpex®/Flygt® and other brand installations
- Optional, Self Contained “Eco-Friendly” Cooling System
- AISI 316SS Components

SPECIFICATIONS	MSP1 & 2	MSP3	MSP4
HP / KW Range	2.6 - 25HP / 1.5 - 15 KW	10 - 46 HP / 7.5 - 34 KW	10 - 180 HP / 7.5 - 115 KW
Max Flow Range -GPM / LPM	2100 GPM / 6,814 LPM	2,400 GPM / 9,085 LPM	8,000 GPM / 30,283 LPM
Max Shut-off Head - Feet / Meters	220' / 67 M	330' / 100 M	285' / 87 M
Discharge Size - Inches / MM	3", 4", 6" / 75, 100, 150	3",4", 6" / 75, 100, 150	6" ,8" ,12" / 150, 200, 300
Solid Handling - Inches / MM	Up to 4" / 100 MM	Up to 4" / 100 MM	Up to 5" / 127 MM
Impeller Type	Vortex / Channel	Vortex / Channel	Vortex / Channel
Max Temp of Pumped Fluid	104°F / 40°C	104°F / 40°C	104°F / 40°C
Max Starts / Stops per Hour	15	15	15
Max Submergence Ft / M	66' / 20 M	66' / 20 M	66' / 20 M
Motor - Squirrel Cage / VFD Rated	2, 4, 6 Pole	2, 4, 6 Pole	4, 6, 8 Pole
Siemens Design - IP68 Enclosure	Yes	Yes	Yes
UL Listed Components	Yes	Yes	Yes
Die Cast Aluminum Rotor	Yes	Yes	Yes
Moisture & Thermal Overload Protection	Yes	Yes	Yes
Power Supply 208/230/460/575 Volts	Yes	Yes	Yes
Ball Bearings - Radial / Thrust	Single / Double	Single / Double	Single / Double
Power & Moisture Sensor Cables Ft / M	25' / 8 M	25' / 8 M	25' / 8 M
Cartridge Mechanical Seals	Yes	Yes	Yes
Cooling Jacket System - Optional	Yes	Yes	Yes

MODULAR DESIGN

- Multiple Configurations
- Mix & Match Module Components
- Motor Housings
- Motor Stators
- Motor Rotors & Cartridge Seals
- Pump Impellers
- Pump Volutes



MSP1, 2, 3 & 4 COMPONENTS

Stator Casing	316SS (MSP1/2/3) Cast iron (MSP4)
Pump Volute / Casing	AISI 316 Stainless Steel
Casing Wear Ring	AISI 316 Stainless Steel
Cooling Jacket	AISI 316 Stainless Steel
Lifting Handle	AISI 316 Stainless Steel
Impeller	AISI 316 Stainless Steel
Shaft	Duplex Stainless Steel SS329
Shaft Sleeve	Duplex Stainless Steel SS329
Hardware	AISI 316 Stainless Steel
Mechanical Seals	SC / SC with Viton Elastomers
O-Rings	Viton



Mody Pumps® Inc.

2166 Zeus Court, Bakersfield, CA 93308. USA
 Tel.: (661) 392-7600 • Fax: (661) 392-7601
<http://www.modypump.com>