

Hydraulic pump

HY35A/B



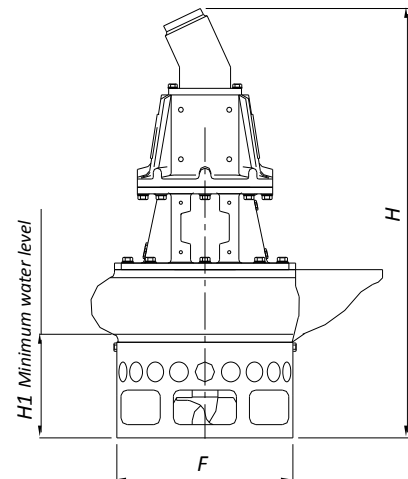
PUMP SPECIFICATIONS	Mod. A	Mod. B
Capacity [m ³ /h - (USGPM)]	120 - (528)	170 - (748)
Head [m - (ft)]	30 - (97,5)	24 - (78)
Impeller diameter [mm - (in)]/type	435 - (17.4)/2 blades closed	
Flanged bore size [DN.../PN... - (in)]	100 - (4)	150 - (6)
Cross section diameter [mm - (in)]	35 - (1.4)	
Weight [kg - (lbs)]	500 - (1100)	530 - (1166)

HYDRAULIC MOTOR	
Motor displacement [cc - (cu in)]	55 - (3.3)
Max. oil flow rate [l/min - (USGPM)]	65 - (286)
Max. pressure [bar - (psi)]	300 - (4350)
Power [kW-HP]	33-45
Speed [RPM]	1180

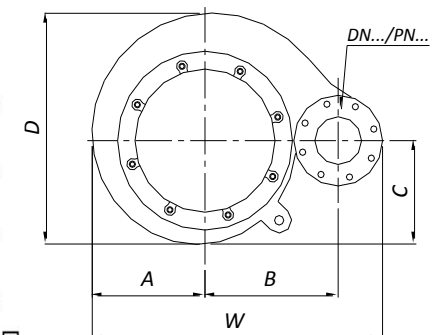
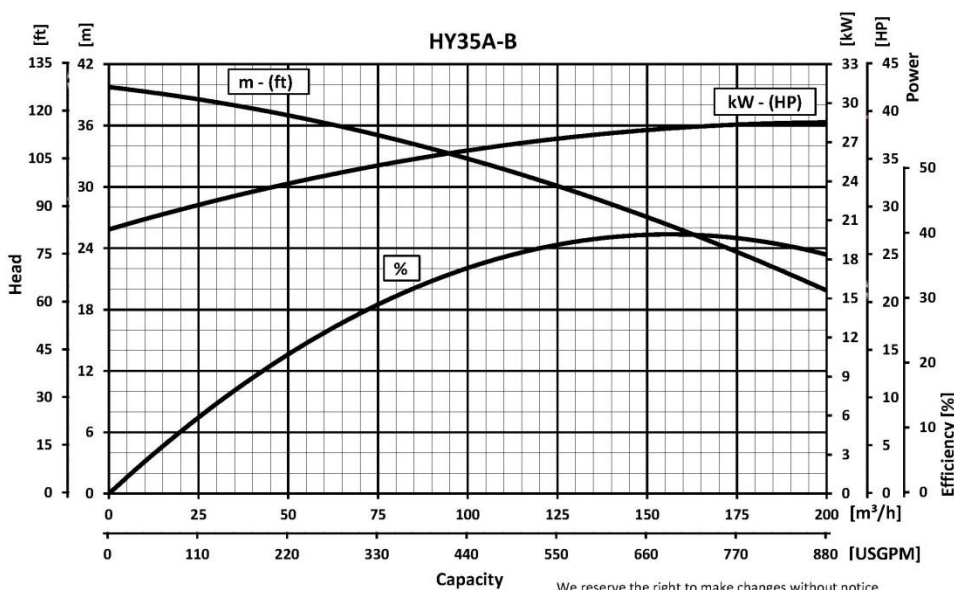
MATERIALS	
Casing	Spheroidal cast iron EN-GJS-500-7 (EN 1563)
Motor housing	Cast iron EN-GJL-250 (EN 1561)
Wear parts	High chrome EN-GJN-HV600 (XCr18) (EN 12513)
Main shaft	High tensile steel 39NiCrMo3 (AISI 9840)

SEALS / LUBRICANT	
Motor side seals	2 lip seals (BUNA)
Impeller side seals	5 lip seals (3 NBR + 2 PTFE) + 1 V-RING (TPU)
Oil type	ISO 320

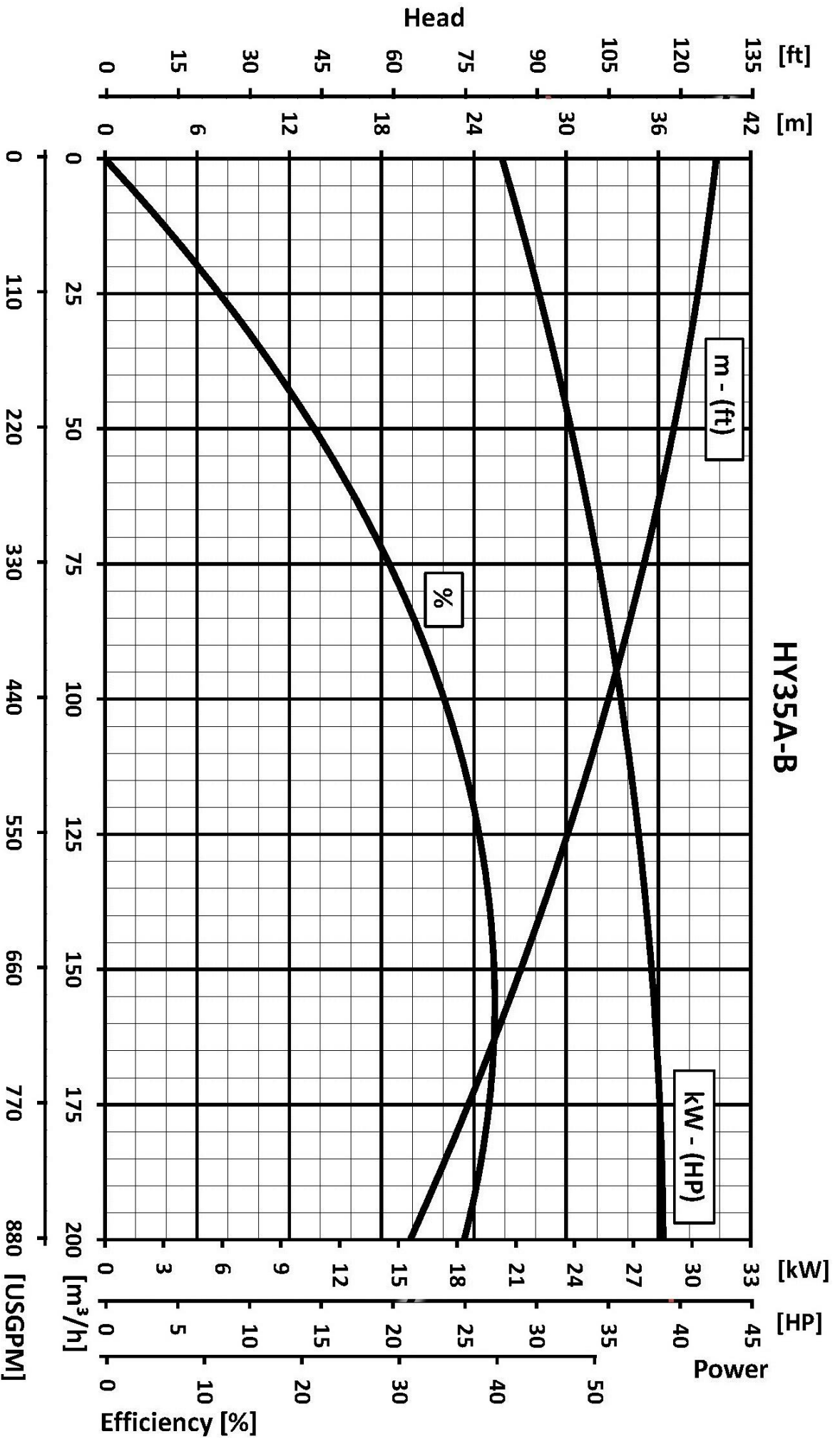
DIMENSIONS [mm - (in)]							
H	W	D	F	H1	A	B	C
1210	818	667	540	270	327	380	323
(48.4)	(32.7)	(26.7)	(21.6)	(10.8)	(13.1)	(15.2)	(12.9)



PERFORMANCE CURVES



HY35A-B



Capacity

We reserve the right to make changes without notice