

Hydraulic pump

HY50HC

PUMP SPECIFICATIONS

Capacity [m ³ /h - (USGPM)]	250 - (1100)
Head [m - (ft)]	22 - (71.5)
Impeller diameter [mm - (in)]/type	380 - (15.2)/2 blades closed
Flanged bore size [DN.../PN... - (in)]	150 - (6)
Cross section diameter [mm - (in)]	60 - (2.4)
Weight [kg - (lbs)]	700 - (1540)

HYDRAULIC MOTOR

Motor displacement [cc - (cu in)]	75 - (4.5)
Max. oil flow rate [l/min - (USGPM)]	90 - (396)
Max. pressure [bar - (psi)]	275 - (4350)
Power [kW-HP]	45-60
Speed [RPM]	1180

MATERIALS

Casing	Spheroidal cast iron EN-GJS-500-7 (EN 1563)
Motor housing	Cast iron EN-GJL-250 (EN 1561)
Wear parts	High chrome EN-GJN-HV600 (XCr18) (EN 12513)
Main shaft	High tensile steel 39NiCrMo3 (AISI 9840)

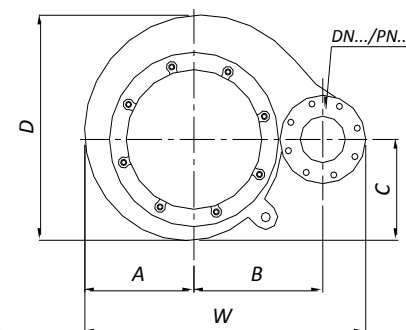
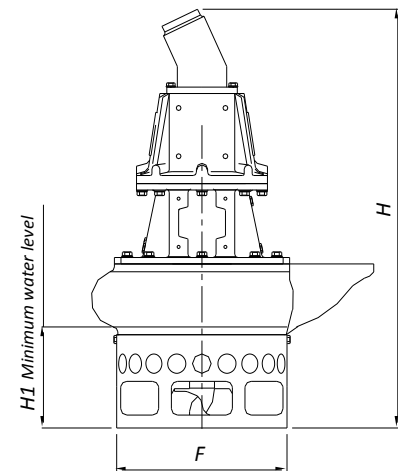
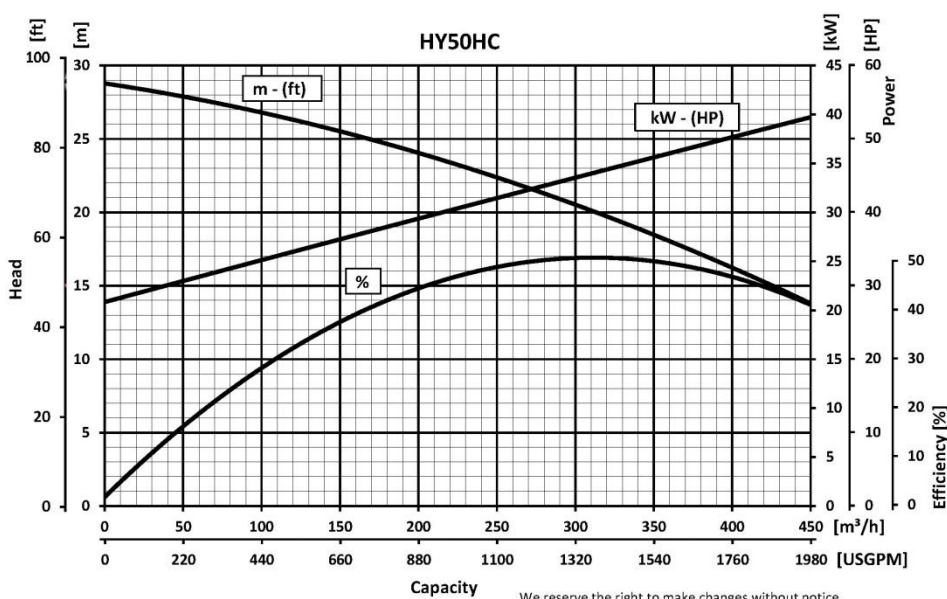
SEALS / LUBRICANT

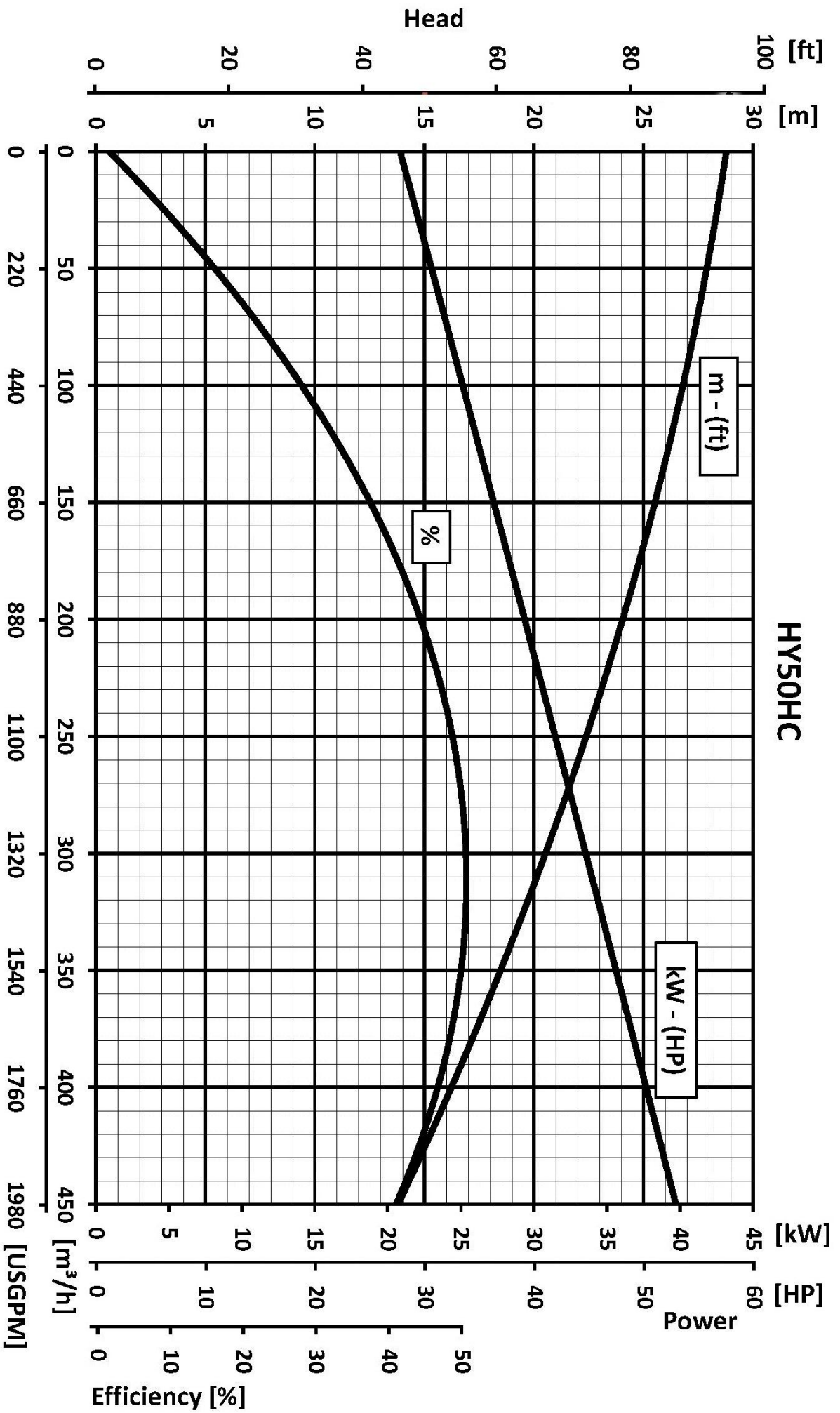
Motor side seals	2 lip seals (BUNA)
Impeller side seals	3 lip seals (BUNA) + 1 V-RING (TPU)
Oil type	ISO 320

DIMENSIONS [mm - (in)]

H	W	D	F	H1	A	B	C
1425	902	736	540	270	350	412	334
(57)	(36.8)	(29.5)	(21.6)	(10.8)	(14)	(16.5)	(13.4)

PERFORMANCE CURVES





Capacity

We reserve the right to make changes without notice